

Your garage. Your lifestyle.  
Your choice.



**Garageflex**

Your garage. Your lifestyle. Your choice.

# Let us help you create a garage to suit your lifestyle.

There's nothing worse than being in a hurry and then having to rummage around in your garage to get to your sports equipment, tools or bike. Wouldn't it be nice if they were easy to find and neatly stored?

## Now that day has come. Time to tackle the garage.

When you look at your garage now, it's hard to imagine it even tidy, let alone a place to be proud of. It can be done – we've helped hundreds of people transform their dumping grounds into showrooms.

Our Garageflex storage system is designed to handle the huge range of weird and wonderful items you need to store: golf clubs, gym kit, paddling pools, skis, garden equipment and more bikes than you'd have thought possible. The system is wall mounted, giving you more usable space. And – hard to imagine now – you'll be able to find what you need, when you need it. You might even be able to fit in a car or two.

## But the possibilities don't end there.

The system is completely flexible; you can move racks around, and add more when you need it – without drilling a hole. If you move home, you can take the fixtures and fittings with you.

And because we line the walls with smart, washable panelling, you can use the space differently. You can turn it into a gym, utility room, office, playroom or somewhere your car looks at home.



**Alastair Broom**

**Managing Director**

01491 579975

info@garageflex.co.uk

You gain a new room AND get to keep the garage. A leading broadsheet carried out an "Added Value" survey in which they stated that the addition of this system to a garage increased the value of the home in excess of £22,000 after a spend of £8,000.

Thank you for your interest in Garageflex. If you need any advice or have any questions, please get in touch – we'll be delighted to help.

## Your garage. Your lifestyle. Your choice.



# Garage Stories

## Before Garageflex

The garage had breeze block walls, timber beams and a concrete floor. The customer wanted to clean the whole space up and transform it into a garage he could be proud of, whilst creating storage space for his golf clubs, bikes and his car.

## After Garageflex

The walls and ceiling were clad and a resin floor laid. A range of hooks were added for bikes, gardening tools and golf clubs. Finally, a suite of metal cabinets were added to create a multi-purpose storage area.

## Final Thoughts

*The customer is absolutely delighted with the finished result.*

*The garage now fulfills all his storage needs and looks fantastic, a real inspiration.*



AFTER



**10  
YEAR  
WARRANTY**

# Our Services

## 1. Design & Install

With our Design & Install Service we work with you to create a garage that suits your needs.

Most of our customers opt for a Complete Garage Makeover which includes fitting the garage with a selection from:

- Cladding to all walls
- A good range of Wall Storage and Activity items
- A choice of Resin or Tiled floor
- Cladding the ceiling and adding some additional storage
- Insulating the Walls and Ceiling
- Installation of a new Garage Door

One way to reduce the cost is to have FlexiTrack installed rather than FlexiPanel. FlexiTrack is simply small sections of our panel which are fastened to the garage wall.

The first step would be for our professional designer to come to your house, measure your garage and find out exactly what you want. They will then produce a design layout that fits with your lifestyle and leave that with you along with a quote to have a think about.

If you wish to go ahead we can then book in a date for you and take a deposit. On the agreed date, our friendly team of professional fitters will arrive to transform your garage. After 3-4 days, they will leave you with a clean and bright garage to be proud of.

## 2. DIY

We have an online store at [www.diy.garageflex.co.uk](http://www.diy.garageflex.co.uk) where everything can be bought to fit out some, or all of your garage.

You can either do everything yourself or we offer a DIY with Design Service where we provide advice on making the most of your garage space.

## 3. Garage Flooring

We offer two types of flooring perfect for the residential garage; Floor Tiles and Resin Floors. Both options provide an extremely hard wearing finish and come in a variety of colours to compliment your garage colour scheme. See page 18 for more information.

Don't want your whole garage fitted out? No problem, you can still ask us to fit one of our fantastic tiled or resin floors, just give us a call to get a quote on 01491 579975.

## 4. Garage Doors

There are many reasons to get a new garage door fitted, ranging from wanting to stop draughts and leaves to replacing two doors with one so you can finally get your car in the garage.

We are proud to work with a tried and tested garage door partner who manufactures in the UK. We offer this service as part of a wider Garageflex makeover or as a standalone service.



# Garage Stories

## Nick Fairley from Henley on Thames

### Before Garageflex

"I was fed up with spending time looking for what I needed and just wanted somewhere to put everything away, clean it all up and enable me to get my car in the garage for once."

### After Garageflex

"It's so clean and tidy. It's light and bright and there's plenty of storage space. The system is so flexible that everything is so easy to move around. And for the first time in seven years of living here, we can now get our cars in the garage. It's brilliant!"

### Final Thoughts

*"The system is so flexible that everything is so easy to move around. And for the first time in seven years of living here, we can now get our cars in the garage."*

Nick Fairley, Henley on Thames

BEFORE



AFTER



**10  
YEAR  
WARRANTY**

This is an example of our workmanship but please note that the Tall Cupboards shown have been replaced with a metal floor standing option.

# Wall storage options for your garage

We understand that space is at a premium whether it be inside the house or the garage. And as we all collect more belongings, the need for additional storage space becomes a necessity. So why not use your garage to add extra storage that can help you clear the clutter inside your house and give you back space to breathe.

With the exception of the cupboards, all of the Garageflex storage range are designed to clip onto either our FlexiPanel or FlexiTrack rather than attach directly to your garage wall. The benefits of our system are that items are easily moved around your garage as and when your needs change and provide an element of insulation.



- Available accessories include Cabinets, Shelves, Bike Racks and more. With the exception of our cupboards, all accessories slot into FlexiPanel for maximum flexibility
- Excludes drafts and eliminates nooks and crannies for bugs to hide in
- The glossy, reflective surface increases light



- Gets everything off the floor
- Cost efficient solution
- Provides the ability to move items horizontally along the track but not vertically

## There are many reasons to add Garageflex to your home

- Our system is easy to clean and accessories can be rearranged as and when you want to
- Creates plenty of extra storage space and clears the clutter
- Adds real value to your home
- All our installations come with a ten year warranty
- Creates a safer environment for all the family
- Professionally designed and installed by Garageflex

## How much will it cost?

Our website has the most up to date prices so please visit [www.garageflex.co.uk/pricing](http://www.garageflex.co.uk/pricing) to find out more, or give us a call on 01491 579975.





*Not everyone wants a full garage makeover and we understand that. In this garage we installed FlexiTrack to the wall so the owner could store all their bikes easily.*

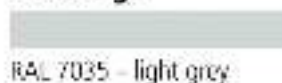


*Or you can have both FlexiPanel and FlexiTrack installed - it's up to you. Your garage. Your lifestyle. Your choice.*

# Cabinet Storage Range

Our new metal cabinet and shelving range gives you flexibility to create storage that's right for you. Our metal range includes cabinets, drawers and cupboards in a range of colours to compliment your Garageflex installation. The range is designed to sit on the floor rather than the wall and has reinforced steel housings with up to a tonne total capacity.

## Housing:



RAL 7035 - light grey

## Top, bottom and fronts:



RAL 5010 - gentian blue



RAL 7035 - light grey

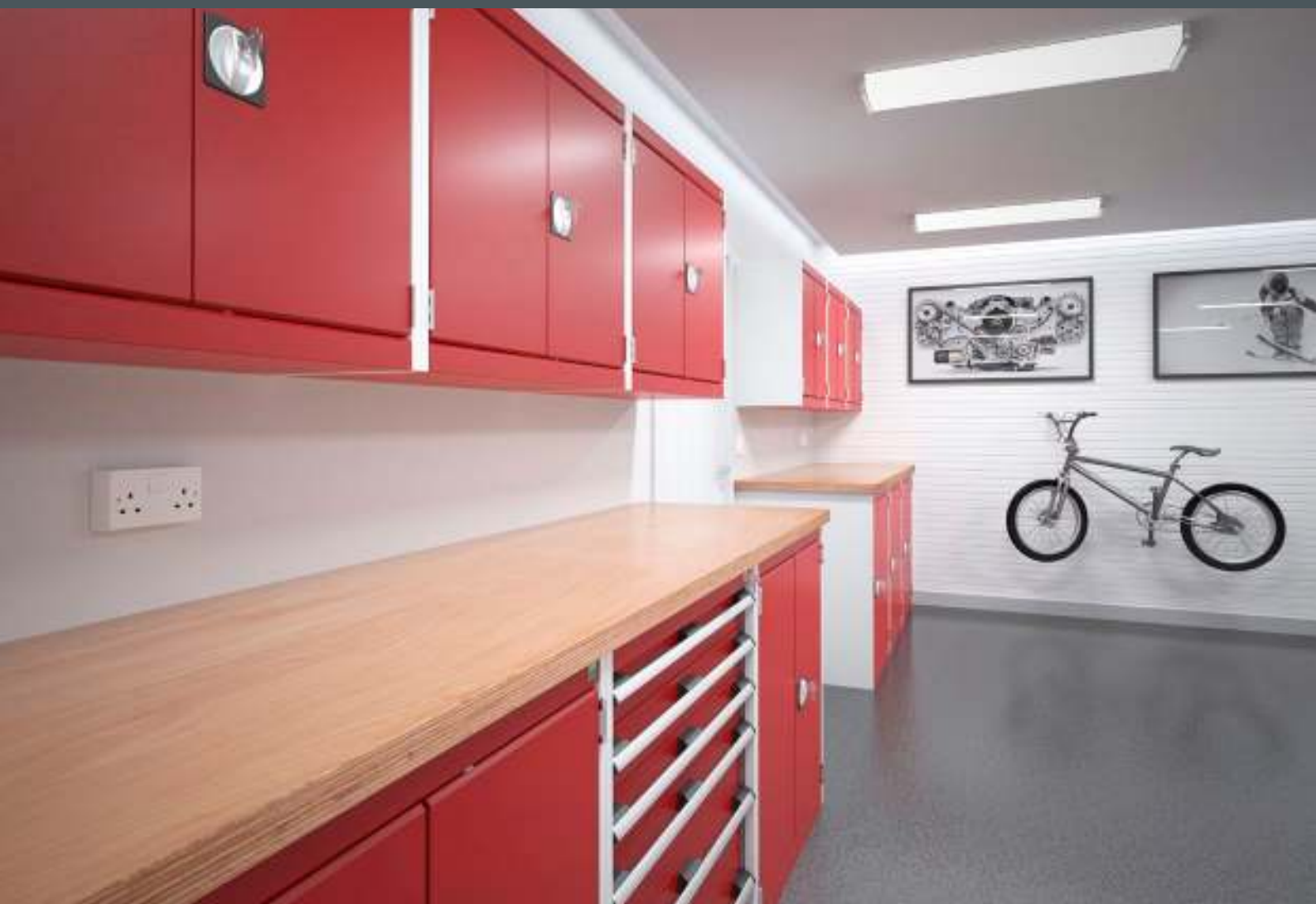


RAL 3004 - crimson red



RAL 7016 - anthracite grey

## Wall Cabinets







All of these units come in a wide range of dimensions but we have itemised the most popular here.

Please do ask if you would like a different size.

## Wall Cabinets

### A. Tall Cabinet

Part of our metal cabinet range, this Tall Cabinet has a tough, welded steel construction and locking doors. Comes with four shelves which can take up to 60kg, this is perfectly suited for every garage.

|                                 |                |
|---------------------------------|----------------|
| <b>FX0001</b>                   | <b>FX0001A</b> |
| 800mm (w)                       | 1050mm (w)     |
| 550mm (d)                       | 550mm (d)      |
| 2000mm (h)                      | 2000mm (h)     |
| UL rated at 60kg for each shelf |                |
| * Extra shelves available       |                |

### B. Base Cabinet

About half the size of the Tall Cabinet, this is perfect when you want to use the above wall space for hooks. Comes with two shelves and locking doors.

|                                 |  |
|---------------------------------|--|
| <b>FX0002</b>                   |  |
| 800mm (w)                       |  |
| 550mm (d)                       |  |
| 900mm (h)                       |  |
| UL rated at 60kg for each shelf |  |
| * Extra shelves available       |  |

### C. Five Drawer Cabinet

This Cabinet has one drawer of 125mm height and four drawers of 175mm height.

|               |
|---------------|
| <b>FX0003</b> |
| 800mm (w)     |
| 550mm (d)     |
| 900mm (h)     |

### D. Wall Cabinet

Our wall cabinet is ideal for fixing to your garage wall and comes with locking doors. The shelf is made of galvanised steel, adjustable on a 25mm pitch with 60kg capacity per shelf.

|                                |  |
|--------------------------------|--|
| <b>FX0004</b>                  |  |
| 800mm (w)                      |  |
| 350mm (d)                      |  |
| 600mm (h)                      |  |
| UL rated at 60kg for the shelf |  |

### E. Mobile Cabinet

This Cabinet is ideal if you want to move it around the garage via its push - pull handle. It comes with a lino worktop and four 125mm diameter castor set, two of which have a brake. It has five drawers, two of which are 100mm and three are 175mm.

|                                 |  |
|---------------------------------|--|
| <b>FX0006</b>                   |  |
| 800mm (w)                       |  |
| 600mm (d)                       |  |
| 980mm (h)                       |  |
| UL rated at 50kg for each shelf |  |



**A**



**B**



**C**



**D**



**E**

## Shelving

### A. 600mm Shelf w/ Hanger Bar

The 600mm shelf is ideal for those narrow areas. The convenience of the built-in hanger bar allows you to store all types of seasonal apparel neatly and effortlessly.

**FX7005A**

609mm (w)  
381mm (d)  
89mm (h)  
UL rated at: 18 kg.

### B. 1200mm Shelf

Load up this shelf with all the items you want to keep off the floor. Hang above the garage door for efficient use of space.

**FX7005**

1219mm (w)  
381mm (d)  
89mm (h)  
UL rated at: 36 kg.

### C. Heavy Duty Shelf

The perfect way to organise bigger items such as toolboxes, vacuums, seasonal products, bags of salt and recycling boxes.

**FX7003**

762mm (w)  
381mm (d)  
393mm (h)  
UL rated at: 90 kg.

### D. Hanger Hooks

Add our hanger hooks to the 600mm or 1200mm shelf and create even more space-saving opportunities.

**FX4014**

25mm (w)  
216mm (d)  
113mm (h)  
UL rated at: 4.5 kg.

### E. Modular Shelving Units

These co-ordinated and durable shelves enable you to create an entire storage centre anywhere in your garage. You can also combine with the Tall, Wall and Mini Cabinets to create an area to suit your lifestyle.

2-Shelf Unit

**FX7014**

700mm (w)  
435mm (d)  
576mm (h)  
Weight Capacity: 40 kg.

3-Shelf Unit

**FX7015**

700mm (w)  
435mm (d)  
897mm (h)  
Weight Capacity: 61 kg.

4-Shelf Unit

**FX7016**

700mm (w)  
435mm (d)  
1320mm (h)  
Weight Capacity: 81.6 kg.

5-Shelf Unit

**FX7017**

700mm (w)  
435mm (d)  
1750mm (h)  
Weight Capacity: 102 kg.





**A**



**B**



**C**



**D**



**E**

## Workbenches and Tables

### A. Workbenches

Use our sturdy bench to clean your golf clubs, mount a vice or to carry out DIY jobs. This ideal workbench is customisable to suit your needs. Adjust the height of the bench up to 1000 mm high.

**SG2750**

1120mm (w)

760mm (d)

810mm (h)

Weight Capacity: 2,267 kg

**SG2850**

1120mm (w)

610mm (d)

810mm (h)

Weight Capacity: 2,267 kg

### Pedestal Bench

Choose our Pedestal Bench for all your DIY needs plus you can choose two different cabinets to go underneath.

**Basic Bench**

**FX0005**

1500mm (w)

600mm (d)

930mm (h)

### B. Option 1: Two Drawer and Cupboard Cabinet

This Cabinet has two drawers, one is 125mm in height and the other is 175mm. It also has one 500mm lockable cupboard with a shelf.

**FX0005**

800mm (w)

550mm (d)

900mm (h)

### C. Option 2: Seven Drawer Unit

This drawer unit has seven drawers, four of them are 100mm, two are 125mm and one is 175mm.

**FX0005A**

800mm (w)

550mm (d)

900mm (h)

### D. Wall Mounted Work Tables

These flexible work tables enable you to create the perfect environment to get all kinds of projects done no matter the size of your garage. The durability of the solid butcher-block top is unmatched in the industry and can withstand the most demanding tasks. The shelf option is one more convenient way to meet your storage needs. And it's so easy to clean underneath.

**4' Table: FX1305**

1219mm (w)

609mm (d)

44mm (h)

Weight Capacity: 68 kg.

**5' Table: FX1306**

1524mm (w)

609mm (d)

44mm (h)

Weight Capacity: 68 kg.

### E. Folding Hobby Table

If your garage space is restricted, the perfect solution is this space-saving work area. Lift up when you need a solid work surface and easily fold down when you are finished. It's never been easier to have a flexible work space in the garage.

**FX1301**

1219mm (w)

609mm (d)

812mm to 914mm (h)

UL rated at: 45 kg.



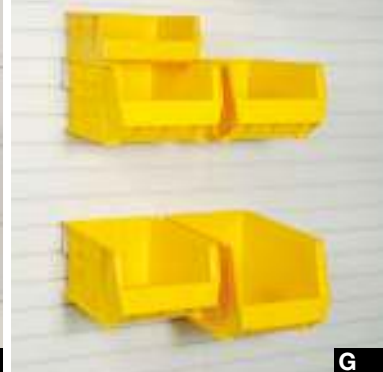
**A**



**C**



**E**



**G**



**B**



**D**



**F**



**H**

## Workshop Accessories

### A. Multi-Purpose Tool Holder

Never search for a tool again. This convenient accessory will help you find your spanner, screwdrivers and hammer at a moments notice. Place it right above your workbench for a useful and organised work area.

**FX2020**

711mm (w)  
228mm (d)  
114mm (h)  
UL rated at: 9 kg.

### B. Tip-Out Bins

Clean up your workbench by easily organising nails, screws, fuses, tapes, clamps and cords—all the items usually found in your "junk drawer."

| Small: FX3002      | Medium: FX3003       | Large: FX3004        |
|--------------------|----------------------|----------------------|
| 600mm (w)          | 600mm (w)            | 600mm (w)            |
| 63mm (d)           | 92mm (d)             | 133mm (d)            |
| 79mm (h)           | 114mm (h)            | 165mm (h)            |
| UL rated at: 2 kg. | UL rated at: 4.5 kg. | UL rated at: 4.5 kg. |

### C. 18-Piece Hook Pack

Hang tools, leaf blowers or anything using the 9 double and 9 single heavy duty hooks that lock into the FlexiPanel for additional security.

**FX3001**

|                        |                        |
|------------------------|------------------------|
| Single:                | Double:                |
| 50mm (w)               | 76mm (w)               |
| 177mm (d)              | 120mm (d)              |
| 89mm (h)               | 89mm (h)               |
| UL rated:4.5 kg./hook. | UL rated: 6.8 kg./hook |

### D. Mobile Stool

Work on your project with this stool and any one of our workbenches. Comfortable, durable and comes with removable storage trays.

**FX3012**

Adjustable height from 510mm to 770mm (h)

### E. Paper Towel Holder

At the end of the day, cleaning up is a breeze with this handy rack that holds jumbo size paper towels. With a Garageflex system, everything stays neat and clean, just the way you like it.

**FX4015**

314mm (w)  
95mm (d)  
76mm (h)

### F. Handyman Rack

Hold any combination of tools and equipment on this unique product. The 24 hooks with safety tips ensure secure placement of spanners and 4 shelves that can be used as a surface for a toolbox or as a matrix to store additional paint brushes, screwdrivers, etc.

**FX2016**

711mm (w)  
279mm (d)  
457mm (h)  
UL rated at: 18 kg.

### G. Organising Bins

These bins are a great way to keep loose items together and organised. Use one or twenty, on a workbench, or the docking station. These versatile bins come in three useful sizes.

| FX3005    | FX3006    | FX3007    |
|-----------|-----------|-----------|
| 104mm (w) | 139mm (w) | 209mm (w) |
| 109mm (d) | 279mm (d) | 374mm (d) |
| 76mm (h)  | 127mm (h) | 203mm (h) |

Size and colour of bins may vary slightly from that described.

### H. Bin Docking Station

This unique bracket allows you to easily remove the bins and move them to another area. Mix and match bin sizes to meet your storage needs. Stack several stations and make an entire area dedicated to storing smaller items.

**FX3011**

609mm (w)  
25mm (d)  
82mm (h)  
UL rated at: 18 kg.



**I J****L****O****Q****R****K****M****P****S**

## Workshop Accessories

### I. Deep Basket

Store your favourite equipment safely and out of the way.

**FX4004**

304mm (w) 304mm (d) 203mm (h)

UL rated at: 18 kg.

### J. Shallow Basket

Your motorcycle gear, car supplies or toys tuck away cleanly in this basket.

**FX4003**

609mm (w) 304mm (d) 101mm (h)

UL rated at: 18 kg.

### K. Giant Hang-All Bracket

This bracket extends 711mm from the wall and folds flat when not in use whether for additional shelving space or to hang heavy equipment, you'll find there's no job it can't handle.

**FX4010**

228mm (w) 711mm (d) 342mm (h)

UL rated at: 18 kg.

### L. Hang-All Bracket

A Garageflex best seller! Ladders, folding chairs, and all sorts of items stay safely out of the way with this strong multi-purpose accessory.

**FX4006**

279mm (w) 177mm (d) 254mm (h)

UL rated at: 18 kg.

### M. Straight Bracket

This is a great place to hang garden hoses, ropes or wet clothes from the beach or slopes.

**FX4001**

13mm (w) 305mm (d) 38mm (h)

UL rated at: 7 kg.

### N. Coat Rack

Keep this rack near the door to collect coats, keys or bags on your way in and keep them within reach on your way out.

**FX4012**

622mm (w) 102mm (d) 89mm (h)

UL rated at: 27 kg.

### O. Fire Extinguisher

Put safety first with this high capacity, rechargeable fire extinguisher. It's UL rated and easily mounts anywhere in your Garageflex garage.

**FX5001**

### P. Garage Vac

Keep your car interior in showroom condition with our wall mounted vacuum cleaner. Available in Midnight Black, Racing Red, Pearl White or British Racing Green.

### Q. Mini Wall Clip

These 25mm clips are perfect for hanging small, lightweight items such as posters, diplomas, photos and clocks. Add your personality to the garage and display some of your favourite memorabilia.

**FX4016**

25mm (w) 6mm (d) 76mm (h)

UL rated at: 2 kg.

### R. Portable First Aid Kit

This convenient case contains all your first aid needs. Light and compact, it's ideal to take with you to sporting events or camping. Better to be safe than sorry.

**FX5002**

### S. Waterfall Hook

This hook is ideal for storing clothes on hangers and can be used above or below other hooks or baskets.

**FX4002**



A



B



C



D



E

## Activity Racks

### A. Single Point Bike Hoist

Put to work that unused ceiling space with the Bicycle Hoist. Just attach the straps to the bike and raise it out of the way. If you accidentally let go, a self-locking cam instantly grips to prevent it from falling.

**FX4011A**

Weight Capacity: 20 kg.  
Vertical lift: 2438mm

### D. Gardening Rack

Shovels, grass seed and more fit perfectly on this rack. It's ideal for anyone with green fingers.

**FX2003**

711mm (w)  
254mm (d)  
419mm (h)  
UL rated at: 18 kg.

### B. Horizontal Bike Rack

Avoid the dreaded domino effect that a tipped bicycle can cause. Use this rack to keep your bike within reach during the summer - and conveniently out of the way for the winter.

**FX2005**

711mm (w)  
406mm (d)  
317mm (h)  
UL rated at: 18 kg.

### E. Racket Centre

For those who "love" the game, this rack easily holds 4 to 6 rackets and lots of tennis balls.

**FX2001**

711mm (w)  
254mm (d)  
431mm (h)  
UL rated at: 18 kg.

### C. Hobby/Sports Centre

The kids have their sports centre and this accessory is for mum and dad. Use it to store varied sports equipment, as a gardening centre or even dedicated just to your number one passion. The versatile design provides shelf space, a removeable carrying bag, hooks for extra storage and even an area for bats or shovels. Use your imagination and you will find this storage centre a must have for your garage.

**FX2010**

914mm (w)  
381mm (d)  
1066mm (h)  
UL rated at: 18 kg.





F



G



H



I



J

## Activity Racks

### F. Double Golf Rack

This rack holds two of your favourite bags, full sets of clubs, and shoes. You will be ready to go as soon as the sun comes up - or before.

**FX2004**

711mm (w)  
241mm (d)  
419mm (h)  
UL rated at: 27 kg.

### I. Golf Activity Centre

A must have for every golfer. It's the answer to storing your golf equipment in your garage. Grab your gear and hit the course at a moments notice.

**FX2011**

685mm (w)  
385mm (d)  
016mm (h)  
Weight Capacity: 27 kg.

### G. Adjustable Ski Rack

Whatever your skiing passion - downhill, cross country or racing - this rack adjusts to your blades. Store boots, gloves, helmet and goggles for an all-in-one solution.

**FX2019**

711mm (w)  
254mm (d)  
177mm (h)  
UL rated at: 18 kg.

### J. Vertical Bike Rack

Conserve wall space and store two bikes on one rack. The additional four hooks are ideal for helmets, pads or gloves.

**FX2015**

711mm (w)  
120mm (d)  
190mm (h)  
UL rated at: 22 kg.

### H. Large Basket

This jumbo storage solution is ideal for loose balls and toys.

**FX2018**

711mm (w)  
304mm (d)  
304mm (h)  
UL rated at: 13 kg.

# Ceilings



## A. PowerTrack

With this innovative PowerTrack ceiling system you can get all occasionally used items off the floor and up into the rafters. These one-of-a-kind channels mount directly into the joists of your ceiling and allow for numerous accessories to be easily added and moved as your needs change. Install a few channels or the entire ceiling.

### FX9150

41mm (w)  
20.8mm (h)  
Available in any length.

## D. Overhead Storage Rack

Save valuable wall space for everyday items. Our adjustable Overhead Storage Rack allows you to utilise the ceiling to store your seasonal items up and away.

### FX7004

1219mm (w)  
1219mm (d)  
406mm to 711mm (h)  
Weight Capacity: 113 kg.

## B. "C" Hanger Hook

This durable hook is perfect for storing bikes during the off season. Also consider a bike hoist for year-round access to your wheels.

### FX9001

127mm (w)  
12.7mm (d)  
228mm (h)  
Weight Capacity: 18 kg.

## E. "D" Hanger Hook

From sleds to fishing rods, this flat based hook is a needed addition to any ceiling system.

### FX9000

177mm (w)  
12.7mm (d)  
254mm (h)  
Weight Capacity: 18 kg.

## C. Ladder Storage Kit

The Ceiling Ladder Storage Kit is a package of 4 x D Hanger Hooks and 2 x 2 ft lengths of PowerTrack to make storing ladders as easy as pie.

### FX9005

178mm (w)  
13mm (d)  
254mm (h)  
Weight Capacity: 18 kg.

## F. Ring Hanger Hook

Using this hook with our bike and 4-point hoists gets large items out of the way and yet you still have access at any moment.

### FX9002

44mm (w)  
7.8mm (d)  
102mm (h)  
Weight Capacity: 18 kg.



# Garage Stories

## Lyndon Cole from Surrey

### Before Garageflex

Retired businessmen Lyndon Cole decided he wanted to spend more time working on his cars but had one big problem. He had been unable to get the cars into his triple garage for the 12 years he had lived in the house.

Having refurbished all the key areas of his home, he didn't know what options existed for the garage until he saw a Garageflex advertisement.

### After Garageflex

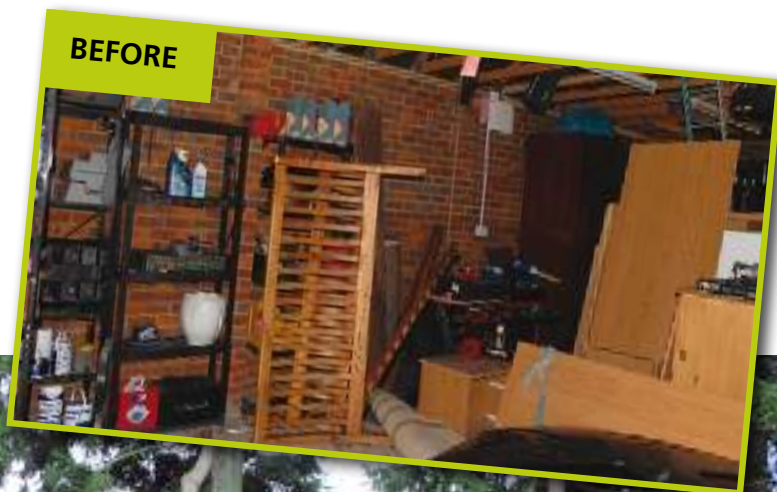
"I am absolutely delighted, I didn't realise how much space I had. Now I have everything I want in the garage as well as space to work on my E-type when time allows."

The white cladding has made the most difference as it has lightened the whole garage, making it a real pleasure to be in".

### Final Thoughts

*"I am absolutely delighted. I didn't realise how much space I had. Now I have everything I want in the garage as well as space to work on my E-type when time allows."*

Mr Lyndon Cole, Surrey



AFTER





# Flooring

Complete your garage right down to the floor. Garageflex offer a choice of floors – interlocking floor tiles or seamless resin.

## Resin Floors

A great floor gives a great finish. Recent advances in floor coating technology and application techniques allow Garageflex to bring commercial-grade floor coatings to the residential market. Garageflex's MMA Floor Coatings are a one-of-a-kind garage floor finishing system that can be applied in a single day and are extremely fast drying.

The main benefits of the system are:

- Great looking finish in a choice of colours and patterns
- Rapid drying time – it can be used an hour after completion
- Easy to clean and maintain
- Decorative floor finish
- Seamless hygienic finish
- Excellent slip resistance

We lay a seamless Methacrylate resin floor that goes straight on to your existing surface. We use a four stage process starting with preparation that gives a very appealing and yet hard finish. It also comes with a 10 year warranty.

## Sample of floor colourings





## Interlocking Floor Tiles

Our floor tiles are manufactured in the UK from recycled PVC and provide a tough, low maintenance finish. They can be laid directly onto a concrete base without the need for adhesive and a typical triple garage can be laid in one day. Each tile measures 500x500mm with a depth of 7mm.

Key benefits are:

- A smart solution to be proud of
- Four times more resistant to abrasions than a concrete floor
- Dust is reduced requiring less cleaning
- Flexible design, you can mix and match colours
- Good anti-slip surface
- Helps insulate your garage
- Holds 6x the weight of a car
- 10 year guarantee

So whether you want checkerboard style, all one colour or something a little bit special, we have tiles to suit every garage.

**Raised Disk Tiles**



**Smooth Tiles**





# Garage Stories

## Mr M, Buckinghamshire

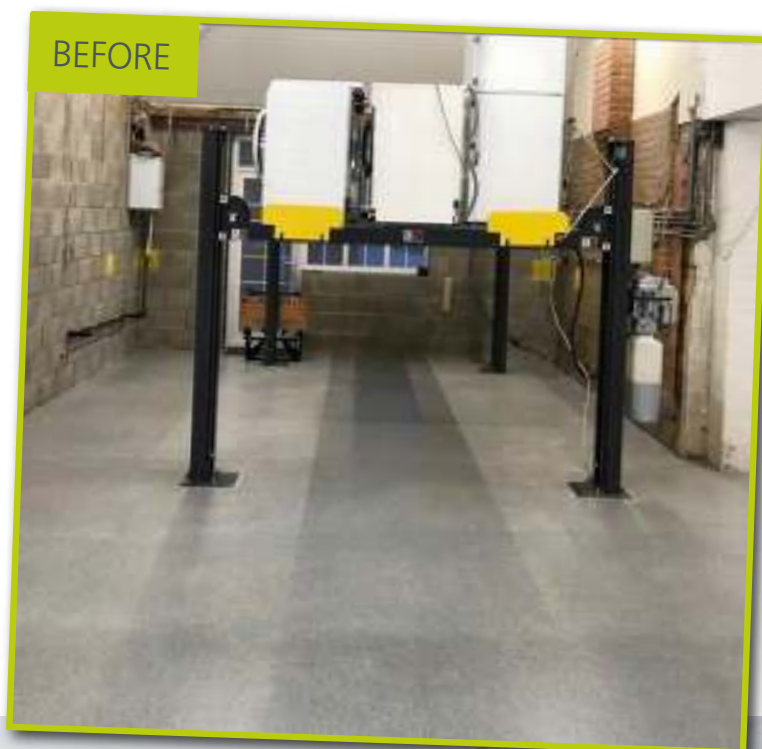
### Garageflex number two for Mr M!

We fitted a double garage in Buckinghamshire about 10 years ago and our customer recently added an extension so he could keep his cars all at home rather than in storage. Once the building works were completed we laid a new Resin floor, clad all the walls, added a good range of additional units and to complete the picture installed two new roller shutter garage doors. This gave him all the space he needed in a beautiful garage that accommodates five cars.

### Final Thoughts

*"My second Garageflex fit out in 10 years and it's even better to go into the garage now"*

Mr M





# Garage Stories

## Lisa, Stourbridge, West Midlands

### Before Garageflex

The garage had become a bit of a dumping ground so when Lisa found us on Instagram, she gave us a call to see how we could help transform her garage into a home gym.

### After Garageflex

Our installation team spent four days transforming the garage into a sleek gym space with storage, bike racks, baskets and hooks. Lisa loves her new home gym which has plenty of storage for all her equipment plus a tiled floor, inset mirror and mounted TV to keep her motivated.



### Final Thoughts

*"After finding Garageflex on Instagram I got in touch to get a quote and within two days an amazing person came and gave me this fabulous design. And here we are the finished look, as you can see it's my home gym."*

*It's got plenty of storage and my daughter will be using it as a playroom as well and we can't wait to start using it properly. It's really exciting!"*

Lisa

AFTER



# FAQs

## Q. Can you give me a quote please?

A. Yes certainly we can give you a no obligation quote. This will involve a visit by a Garageflex expert who will talk over with you the options and designs, will measure your garage and then, using our own Garageflex software will give you detailed drawings and costs of the garage. You will be left a drawing of exactly how your garage will look after the Garageflex system has been installed.

## Q. How much will it cost?

A. This depends on the size of garage, and the height and length of wall space that you want covered in our FlexiPanel system. All garages are different but in a brief telephone conversation we shall be able to give you a very good idea based on our experience.

## Q. Can I install the system myself?

A. Yes you can. Whilst the Garageflex system was designed for professional installation it can be installed by the DIY enthusiast who has a basic skill – and time! Visit [www.diyourggarage.co.uk](http://www.diyourggarage.co.uk) to buy our products.

## Q. How flexible is the Garageflex system?

A. It is a great advantage that it is very flexible. Customers can have one, two or three walls fitted with or without the floor and ceiling system. And then you can have any number of units placed on the FlexiPanel. It doesn't stop there: once installed you can move the units without the need for any tools. And you can add more units as your needs change.

## Q. I am building a new house. How soon should we talk to you about the garage?

A. As soon as possible and preferably while you are planning everything. There is a lot of useable space in the garage but quite often the walls will be used for plant and electrics. This takes away that space so there may be ways of re-arranging the electrics etc. into a plant room. The garage will always be the last area to be completed but planning it can be very useful.

## Q. Is it easy to keep clean?

A. Absolutely. If you have had all the walls, ceiling and floor installed then it stays a lot cleaner anyway. We recommend the floor tiles are cleaned with a floor cleaning solution but the walls only need a light dust occasionally.

## Q. Do you offer a Warranty?

A. Yes we offer a 10 year Warranty on our products, apart from Garage Doors which have two years.

## Q. What happens if I move house?

A. Firstly your garage will offer a real "Wow" factor so make the most of it when you market your house. You can then include everything in the sale or take whatever units you want to your next home. Obviously if you take units with you then you will need the FlexiPanel in your new house. But make sure the Agents know what you are leaving and what you are taking.

## Q. What happens now?

A. Our brochure and website at [www.garageflex.co.uk](http://www.garageflex.co.uk) will have given you a lot of information but we suggest a brief telephone call to your local Garageflex office and then a mutually convenient appointment can be made to take it to the next stage.

## Q: What is FlexiPanel?

A. Our FlexiPanel is a durable, white glossy wall panel which fits to the garage wall via timber battens and from which all of our storage accessories can be attached. It is ideal for the garage environment as it doesn't warp, is waterproof and bug proof and is fire-rated.

## Q. Where do I put everything whilst you are fitting out my garage?

A. We do need the garage to be clear to get the job done as quickly as possible. Let us know if this is going to be an issue for you and we'll try to find a solution for you.

# Your garage. Your lifestyle. Your choice.



# What our customers say





# Why choose Garageflex?

## The Garageflex Advantage

- Professionally designed and installed
- Easy to clean and rearrange
- Glossy reflective surface increases light
- Weather proof, water-proof and bug-proof
- UL load tested
- 10 year warranty

“

*I would like to add my sincere thanks for the quality of service we have received from every member of staff. From our initial contact at Medmenham, Abi Leonard on her inspection visit, her advice and subsequent visit after installation to help us organize things and Matt, Bill and Peter who actually did the installation, everyone was extremely professional, friendly and a credit to your company. I would also like to complement the Floor Installers, David, Paul and the crew who went out of their way to explain everything and did a fantastic job.*

Mr and Mrs T, Buckinghamshire, August 2018

”



## Get in Touch

We cover the whole of the UK and have Design Consultants placed strategically across the country.

### Head Office

Unit 7a, Westfield Farm

Medmenham

Near Marlow

Buckinghamshire

SL7 2HE



01491 579975



[info@garageflex.co.uk](mailto:info@garageflex.co.uk)



[www.garageflex.co.uk](http://www.garageflex.co.uk)



Garageflex



@flexgarage



Garageflex



# Garageflex

Your garage. Your lifestyle. Your choice.